

Hyper-V Manager on Windows 8.1

Hyper-V host configuration

- Log on to server
 - Configure Firewall
 - The easiest ways to manage firewall on a Hyper-V core server is to;
1. Disable firewall all together

netsh advfirewall set allprofiles state off

```
PS E:\> netsh advfirewall set allprofiles state off
Ok.
```

2. Enable Remote management of Firewall so it can be managed from any server with GUI

netsh advfirewall show currentprofile <--- Shows the configuration of the current active profile

```
PS E:\> Netsh advfirewall show currentprofile

Domain Profile Settings:
-----
State                        OFF
Firewall Policy              BlockInbound,AllowOutbound
LocalFirewallRules           N/A (GPO-store only)
LocalConSecRules             N/A (GPO-store only)
InboundUserNotification      Disable
RemoteManagement            Disable
UnicastResponseToMulticast   Enable

Logging:
LogAllowedConnections         Disable
LogDroppedConnections         Disable
FileName                      %systemroot%\system32\LogFiles\Firewall\pfirewall.log
MaxFileSize                   4096

Ok.
```

netsh advfirewall set currentprofile settings remotemanagement enable

netsh advfirewall firewall set rule group="Windows Firewall Remote Management" new enable=yes

- Adding a local user that will be used for the connection

NET USER hypervTest "CoolJoe12" /ADD

```
PS E:\> net user hypervTest "CoolJoe12" /add
The command completed successfully.
```

NET LOCALGROUP "Administrators" "hypervTest" /add

```
PS E:\> net localgroup "Administrators" "hypervTest" /add
The command completed successfully.
```

- Configure Windows Remote management on host server

WinRM qc

```
PS E:\> winrm qc
WinRM service is already running on this machine.
WinRM is already set up for remote management on this computer.
PS E:\> _
```

Client Configuration

- Log on to computer
- Edit the hosts file on the file on the computer
 - Start up a PowerShell Windows as Administrator
 - Within the Administrative PowerShell

notepad C:\Windows\System32\drivers\etc\hosts

- And enter the IP Address and Server Name of the Hyper-V Host as seen in the screenshot below

The screenshot shows a Windows PowerShell window with the following commands and output:

```

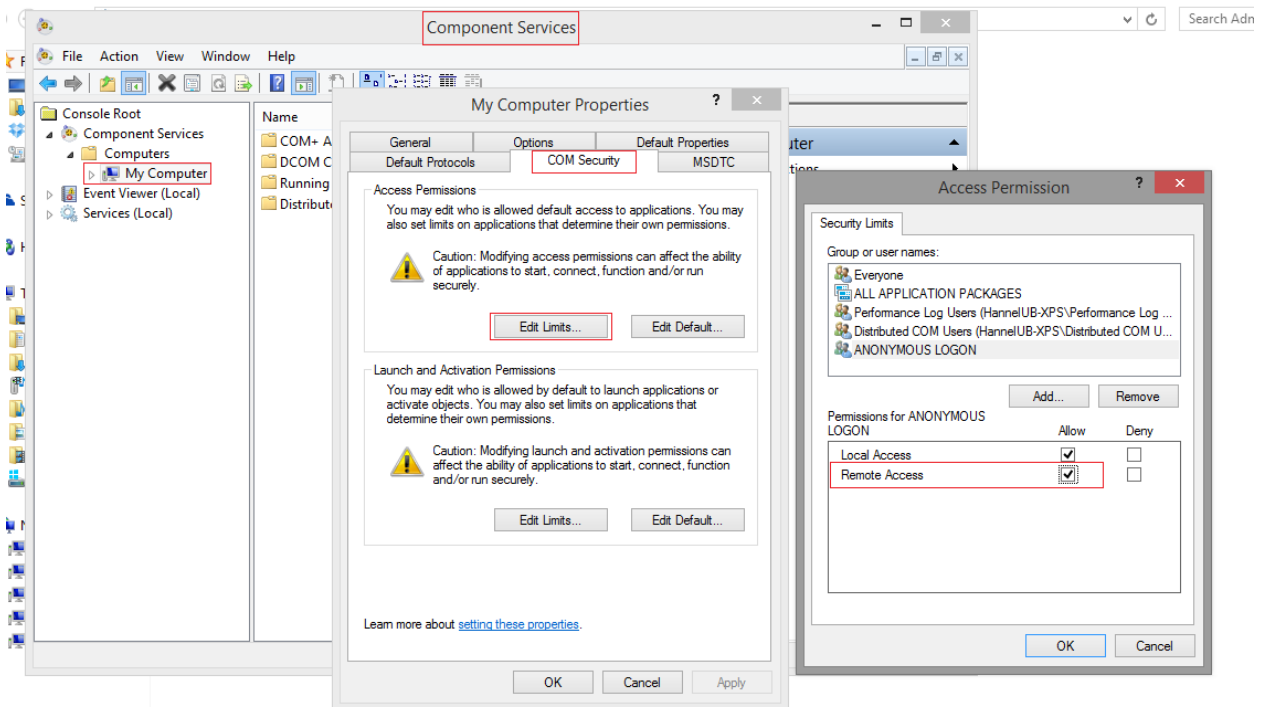
PS C:\Windows\system32> hostname
HannelUB-XPS
PS C:\Windows\system32> notepad C:\Windows\System32\drivers\etc\hosts
PS C:\Windows\system32>
  
```

The Notepad window shows the contents of the hosts file:

```

# entry should be kept on an individual line. The IP address should
# be placed in the first column followed by the corresponding host name.
# The IP address and the host name should be separated by at least one
# space.
#
# Additionally, comments (such as these) may be inserted on individual
# lines or following the machine name denoted by a '#' symbol.
#
# For example:
#
#       102.54.94.97   rhino.acme.com   # source server
#       38.25.63.10   x.acme.com       # x client host
#
# localhost name resolution is handled within DNS itself.
#
#       127.0.0.1     localhost
#       ::1           localhost
#       192.168.0.205 W12E13-HYPERV
  
```

- Allowing Remote access to the Computer object
 - Go to *Control Panel* then *Administrative Tools*
 - Under *Administration Tools* got to *Component Services*
 - Expand *Computers*, then right-click on *My Computer* and go to *Properties*
 - Within the properties to go the *COM Security* tab under *Access Permissions* click on *Edit Limits*
 - Select *Anonymous Logon* and check the *Allow* under *Remote Access*



- Adding credential for Hyper-V Manager to use to make connection

cmdkey /add:W12E13-HYPERV /user:hypervTest /pass:CoolJoe12

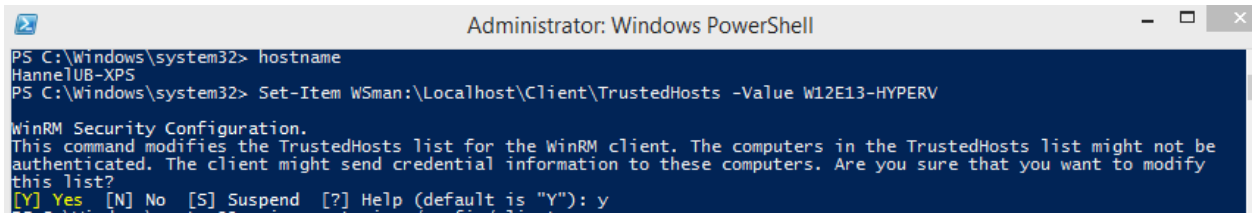
The screenshot shows a Windows PowerShell window with the following commands and output:

```

PS C:\Windows\system32> hostname
HannelUB-XPS
PS C:\Windows\system32> cmdkey /add:W12E13-HYPERV /user:hypervTest /pass:CoolJoe12
CMDKEY: Credential added successfully.
PS C:\Windows\system32>
  
```

- Adding Hyper-V host server to the WinRM Trusted Host on the client

Set-Item WSMan:\localhost\Client\TrustedHosts -Value W12E13-HYPERV -Concatenate

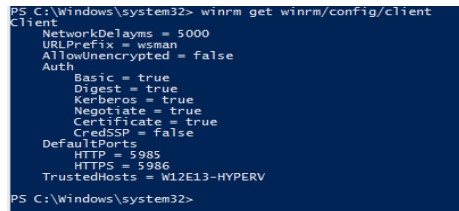


```
Administrator: Windows PowerShell
PS C:\Windows\system32> hostname
HannelUB-XPS
PS C:\Windows\system32> Set-Item WSMan:\Localhost\Client\TrustedHosts -Value W12E13-HYPERV

WinRM Security Configuration.
This command modifies the TrustedHosts list for the WinRM client. The computers in the TrustedHosts list might not be
authenticated. The client might send credential information to these computers. Are you sure that you want to modify
this list?
[Y] Yes [N] No [S] Suspend [?] Help (default is "Y"): y
```

- WinRM Verification can be done

winrm get winrm/config/client



```
PS C:\Windows\system32> winrm get winrm/config/client
Client
  NetworkDelays = 5000
  URLPrefix = wsman
  AllowUnencrypted = false
  Auth
    Basic = true
    Digest = true
    Kerberos = true
    Negotiate = true
    Certificate = true
    CredSSP = false
  DefaultPorts
    HTTP = 5985
    HTTPS = 5986
  TrustedHosts = W12E13-HYPERV
PS C:\Windows\system32>
```

DONE.